

 **CST**
TYRES

www.csftires.com

 **MAXXIS**

www.maxxis.com

ADVENTURE



 **ABR** 2025
FESTIVAL 
27 - 29 | JUNE | 2025
RAGLEY HALL • WARWICKSHIRE

 **BICKERS**
POWERSPORTS

MAXXIS

INTRODUCTION

Since its founding more than 50 years ago, Maxxis International has been dedicated to making tyres riders and drivers can trust for quality and performance.

Trust in Maxxis extends from average consumers to professional drivers and riders, who rely on Maxxis tyres to win world and national championships, Olympic medals, and more.

Today, Maxxis is truly a global company with operations in Asia, Europe and North America and more than 30,000 employees around the world. Maxxis can boast product distribution throughout 180 countries and has sales from its main and subsidiary distribution centres across the globe.

Since its inception, Maxxis has expanded its product range tremendously; entering multiple new markets and steadily growing a loyal brand following. Once specialising solely in bicycle tyres, Maxxis now produces tyres for motorcycles, cars, 4x4s, light trucks, trucks and buses, ATVs, lawn and garden products, race karts, industrial vehicles and trailers.

Maxxis supplies tyres as original equipment to major companies all over the world:

- Original equipment supplier of car tyres to BMW, Ford, GM, Honda, Hyundai, Mercedes Benz, Mini, Mitsubishi, Nissan, Peugeot, Toyota, Suzuki and VW.
- Original equipment supplier of Motorcycle tyres to BMW, Fantic, Gas Gas, Honda, Husqvarna, Kawasaki, KTM, Suzuki, TYM and Yamaha
- Original equipment supplier of ATV tyres to Arctic Cat, BRP, Honda, John Deere, Kawasaki, KTM, Polaris, Suzuki, Textron and Yamaha
- Original equipment supplier of bicycle tyres to Canyon, Giant, Ibis, KONA, Norco, Pivot, Revel, Santa Cruz, Scott, Transition and Yeti
- Original equipment supplier of scooter tyres to Aprilia, Gilera, Kymco, Malaguti, MBK, Piaggio, Suzuki and Yamaha



INTRODUCTION

Leading the way since 1975

When it comes to tier one motorcycle parts, consumables and accessories, Bickers Powersports has led the way since 1975 in providing the trade with the best quality, at the right price and at the right time.

From chains to oil, tyres to specialised bike tools, Bickers Powersports is the one stop shop for a wide range of both premium and value-driven parts and accessories that meet the demands and expectations of all types of motorcyclist.

Established since 1975 in Ipswich, and now based in the port of Felixstowe, Bickers Powersports prides itself on good old-fashioned customer service. Now backed by Maxxis International, Bickers Powersports remains the same friendly family firm it was four decades ago. It is

through its industry knowledge and shared values that Bickers Powersports understands the unique challenges facing the market, meaning the company supports its customers to get the most out of stocking and selling the wide variety of brands and parts it supplies. Special offers are introduced regularly to reward loyalty and provide even more sales opportunities for its customers.

The quality and value of the parts speak for themselves, but what makes us stand out is the company's commitment to its customers. 98 per cent of orders arrive with customers the next day, while stock availability is at a market high of 96 per cent. This means if you need it, chances are we have it and will get it to you as soon as possible.



From the very start more than 50 years ago, CST has set the standard for excellence in the tyre industry. Building on foundations of quality, service and integrity it isn't a coincidence that CST has become the world's largest manufacturer of motorbike and bicycle tyres and one of the most prodigious producers of tyres for car, 4x4, motorcycle, ATV, truck, agricultural and lawn and garden equipment.

Distributed in more than 150 countries, and with over 20,000 employees around the globe, CST uses machinery from Germany, Holland, Japan and Taiwan to adhere to the most stringent international standards and deliver products that exceed expectations in all sectors.

With facilities including six factories in Xiamen, one of the largest and most advanced testing complexes in the world, and a new 1.24million m² PCR tire manufacturing plant, CST continues to innovate to keep the world on the move with more safety, more efficiency and more fun.

Tyres play a vital yet often unnoticed and inconspicuous role in all our lives. Whether for pleasure or business, safety and reliability are of paramount importance and at the core of everything CST. That's why CST customers stay with us – from the first bicycle and on through years of cycling, motorcycling or driving.

Producing tyres for all modes of transport, for people all over the world is a responsibility we are passionately serious about.

Our ethos means we will always endeavour to reduce and offset environmental impact; use sustainable rubber sources; to help with humanitarian and social issues; to support charities, promote scholarships and education; and to develop grassroots sports for the enjoyment and benefit of all.



Dave Bickers pictured in 1966



Early Felixstowe warehouse



Dave Bickers mid-race

Established in 1975, Bickers Powersports was founded by motocross champion and all-round motorcycle enthusiast Dave Bickers. Bickers began as a motorcycle parts and accessories shop in Ipswich in the 60s and quickly became the biggest motorcycle shop in the area, even supplying other shops to the then-known area of Anglia. The growth in distribution took the Bickers shop away from its original business, so on 2nd April 1975, Dave Bickers formed Anglia Accessories.

This new wholesale company was supplied by a specialist importer of motorcycle products owned by Peter McMartin; the first independent supplier of Japanese aftermarket parts to

the UK. Both companies merged in the 80s, taking the Bickers name (Bickers Anglia Accessories Ltd) to become a leading supplier of parts and accessories to the aftermarket motorcycle market. It later renamed in January 2000 to 'Bickers' and then in 2025 to 'Bickers Powersports' as part of its 50th birthday celebration and homage to its racing history.

In 2005, the company moved from its original base in Ipswich to a 3.5-acre site in Felixstowe where it has continued to grow and thrive with the benefit of ultimate transparency when it comes to incoming shipments, leaving plenty of time for product inspections and regulatory checks before products are dispatched to dealers across the UK.

ADVENTURE

PREMIUM RADIALS



MAXXIS

MAXXVENTURE

MA-ADV

The Maxxventure MA-ADV is the new go-to tyre for the intrepid adventure rider. It's ready to take on all terrains, performing impressively on the autobahn and off.



CST

RIDEAMBRO

CM-A1

The Ride Ambro CM-A1 has been developed to provide excellent road comfort and stability on small adventure bikes needing H-rated tyres to medium and large adventure bikes fitted with or without luggage.



CST

RIDEAMBRO

CM-A3

The Ride-Ambro CM-A3's all new fish scale tread has been designed to offer a 70/30 road/off-road balanced tyre. The tyre is at home on the road offering high-speed stability and comfort or in the mud with great traction.



CST

RIDEAMBRO

CM-AD01

The new CST CM-AD01 is a new rugged adventure tyre for today's small to medium adventure bikes. The hard looking tyre perfectly offsets the modern styling of many new bikes.

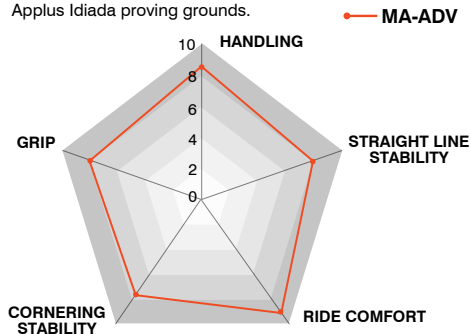
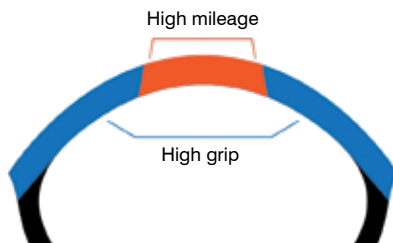
MAXXIS**MAXXVENTURE****MA-ADV****The Maxxventure MA-ADV is the new go-to tyre for the intrepid adventure rider**

Designed with new generation technology, on the latest radial tyre building machines with the very latest in rubber compound technology delivering extraordinary performance. With its 80/20 road/off-road pattern design it is ready to take on all terrains, performing impressively on the autobahn and off.

- Full-silica high-grip compound with enhanced structure improves performance by 30% in the wet and 20% in the dry
- New Dual Compound technology extends mileage by 30%
- Large tread blocks with wide grooves for excellent water dispersion and wet traction
- Combination of tyre construction and tread design provides super straight-line handling and stability
- Optimised pattern design at the shoulder creates a larger contact patch for superior cornering

**MA-ADV PERFORMANCE**

MA-ADV tyres have been durability tested and performance proven under vigorous conditions at the Spanish-based Applus Idiada proving grounds.

**DUAL COMPOUND**

New dual compound design provides
30% MORE MILEAGE



OE FITMENT

BMW: F800GS

The Maxxventure has everything the other major manufacturers have, except the price tag

PATTERN DESIGN



1: Balanced handling and stability with a higher sea to land ratio throughout the centre portion of tyre. Provides great water drainage and balanced handling and stability

2: Increased on-road performance delivered by the higher land to sea ratio on shoulders that provide increased confidence and traction on-road

3: Off-road traction delivered by the large main groove across tread surface improves off-road traction and overall braking stability

4: Improved water/sand/mud drainage; the grooves get gradually wider from the centre to the shoulder to improve water/sand/mud drainage

	Tyre Size	LSR	TT/TL	Order #
F	110/80R19	59V	TL	2786017
F	120/70-ZR19	60W	TL	2786018

ARRIVING Q3, 2025

	Tyre Size	LSR	TT/TL	Order #
R	150/70R17	69V	TL	2786019
R	170/60-ZR17	72W	TL	2786020

ARRIVING Q3, 2025

CST**RIDE AMBRO****CM-A1**

The Ride Ambro CM-A1 has been developed to provide excellent road comfort and stability on small adventure bikes needing H-rated tyres to medium and large adventure bikes fitted with or without luggage

The premium tread compound delivers perfect performance on wet or dry surfaces with incredible mileage wherever the journey goes. The CM-A1 is an adventure, multi-directional tyre designed to offer excellent grip on difficult trails with minimal tyre wear.

- Wide, deep grooves for excellent water dispersal and improved wet riding
- Asymmetrical tread pattern to ensure stability and minimal tyre wear
- Large tread blocks for effective grip and stability on sand, rocks and roads



	Tyre Size	LSR	TT/TL	Order #
F	120/70-ZR17	61W	TL	2760297
F	110/80R19	59V	TL	2760291
F	120/70R19	60V	TL	2760292
F	90/90-21	54H	TL	2760290

	Tyre Size	LSR	TT/TL	Order #
R	150/70R17	69V	TL	2760293
R	160/60-ZR17	69W	TL	2760298
R	170/60R17	72V	TL	2760294

Tyre Pair	Order #
CM-A1 PAIR 120/70-ZR17 and 160/60-ZR17	2760285
CM-A1 PAIR 110/80R19 and 150/70R17	2760286
CM-A1 PAIR 120/70R19 and 170/60R17	2760287
CM-A1 PAIR 90/90-21 and 150/70-17	2760289

ADVENTURE

RIDE **AMBRO**

CM-A3

The Ride-Ambro CM-A3's all new fish scale tread has been designed to offer a 70/30 road/off-road balanced tyre

The tyre is at home on the road offering high-speed stability and comfort or in the mud with great traction.

The tread has been designed with grip and water evacuation in mind with the large blocks offering a perfect balance of traction in mud and sand as well as balanced feel on the road.

- Single steel spiral construction enhances high-speed stability
- Nano-Silica compound improves grip in the wet
- Grooves arrangement guarantees great traction and water/mud dispersal



	Tyre Size	LSR	TT/TL	Order #
F	120/70R17	58H	TL	2785057
F	110/80R19	59V	TL	2785059

	Tyre Size	LSR	TT/TL	Order #
R	160/60R17	69H	TL	2785058

CST**RIDE AMBRO****CM-AD01**

The new Ride Ambro CM-AD01 is a new rugged adventure tyre for today's small to medium adventure bikes. The hard looking tyre perfectly offsets the modern styling of many new bikes

At home on the road, you can also take the CM-AD01 off road with its upgraded tread compound enhancing its resistance to cutting. The 70/30 road/off-road pattern allows a rider to choose the best tyre for their bike.

The square tread blocks deliver excellent water evacuation, with traction and grip when needed in either mud or sand for those ventures off road.

- Large, crossed, central block pattern provides excellent traction and riding stability, for on and off-road use
- Classic lug pattern block ensures cornering stability
- Special sipes on the grooves improve mud and debris ejection
- Upgraded compound delivers great grip and wearing durability



	Tyre Size	LSR	TT/TL	Order #
F	110/80-17	57S	TL	2760250
F	110/70-17	54S	TL	2760253

	Tyre Size	LSR	TT/TL	Order #
R	130/70-17	62S	TL	2760251
R	150/60-17	66S	TL	2760252

**MAXXIS****TRAILMAXX****M7319/M7320**

This trail-riding motorcycle tyre is designed to provide grip, comfort and reliability to trail riders everywhere.

- A hybrid between trials and enduro
- Perfect for green-laning
- Designed to provide grip on a wide range of surfaces
- OE fitment on the KTM Freeride
- Performs even on wet, slippery rock
- E-marked



	Tyre Size	LSR	TT/TL	Order #
F	2.75-21*	45M	TT	2760319

	Tyre Size	LSR	TT/TL	Order #
R	4.00-R18*	64M	TT	2760320

*All E-marked street legal.

CM509

- The CM509's tread pattern is designed to provide better grip in all weather
- With its improved water evacuation and radial body construction it delivers ultimate riding stability and comfort



	Tyre Size	LSR	TT/TL	Order #
F	110/80R19	59V	TL	2760264
F	90/90-21	54H	TL	2760266

	Tyre Size	LSR	TT/TL	Order #
R	140/80R17	69H	TL	2760260

TRAXER

C6017/M6017

- Innovative, versatile motorcycle tyre with aggressive tread for excellent grip and cornering confidence on a variety of surface conditions
- Enables you to ride in every condition, on or off-road
- Curve of the footprint area provides stability at all lean angles
- V-groove tread pattern is designed to allow more efficient water and mud dispersion
- Thickness of the tread gives excellent comfort



	Tyre Size	LSR	TT/TL	Order #
F	110/90-17	60P	TL	2760696
F	100/90-18	56S	TT	2760698
F	90/90-19	52P	TT	2760699
F	90/90-21	54P	TL	2760700

	Tyre Size	LSR	TT/TL	Order #
R	130/80-17	65S	TT	2760697
R	140/80-17*	69H	TL	2760280

*M6017

C186

Tyre Size	LSI	PR	TT/TL	Order #
3.00-14*	40N	4PR	TT	2760207
3.00-18*		4PR	TT	2760209
3.00-19*	49N	4PR	TT	2760211
3.00-23*	56P	4PR	TT	2760202

*All E-marked street legal.



C858

Tyre Size	LSR	TT/TL	Order #
4.60-17*	4PR	TT	2760225
3.00-18*	48N	TT	2760229
3.50-18*	-	TT	2760204
4.10-18*	4PR	TT	2760219
2.75-21*	45P	TT	2760223

*All E-marked street legal.





ENDURO

MaxxEnduro

M7324

The MaxxEnduro is the weapon of choice for our endurocross pros

The compound excels across a variety of conditions with a compliant carcass, is designed to grip the gnarly obstacles found on an endurocross track. The MaxxEnduro also excels on technical trail rides, inspiring confidence through predictable traction and unparalleled ride comfort

- Tread pattern features widely spaced large knobs that bite hard, shed mud and steer quickly
- Knob sides enhance grip in hard terrain and rocks by increasing the tyre's biting edges and knob flex
- Aggressive shoulder knobs instill rider confidence in corners
- Tried and trusted in harsh Australian conditions – so ready for anywhere
- Intermediate, Soft and Super Soft rear available for classic enduro to hard enduro
- FIM compliant/E-marked



	Tyre Size	LSR	TT/TL	Compound	Order #
R	140/80-18*	70R	TT	Super Soft	2760305
R	140/80-18*	70R	TT	Soft	2760306
R	140/80-18*	70R	TT	Intermediate	2760307

* E-marked

MaxxEnduro

M7332F

The all-new MaxxEnduro; tried and tested by Enduro World Champion, Brad Freeman

- Championship-winning tyre
- Tyre profile brings a whole new level to rider feel
- Flat contact patch for grip even to sheer/slippery surfaces
- Design decreases chunking and improves braking
- FIM compliant/E-marked



	Tyre Size	LSR	TT/TL	Order #
F	90/90-21*	54R	TT	2760302

* E-marked

MAXXCROSS Enduro

M7311/M7313/M7314/M7314K

The versatile Maxxcross Enduro range are E-marked road legal tyres that are ideal for virtually all enduro and all-terrain conditions

- Side blocks provide accurate steering in mud
- Aggressive cornering ability
- Long-lasting tyre ideal for hobby riding and green laning
- FIM compliant



M7311 M7313 M7314 M7314K

M7311

	Tyre Size	LSR	TT/TL	Order #
F	80/100-21*	51M	TL	2760301
				* E-marked

M7313

	Tyre Size	LSR	TT/TL	Order #
F	90/90-21*	54R	TT	2760311
				* E-marked

M7314

	Tyre Size	LSR	TT/TL	Order #
R	120/90-18*	65R	TT	2760315
				* E-marked

M7314K

	Tyre Size	LSR	TT/TL	Order #
R	140/80-18	70R	TT	2760316
R	140/80-18* Super soft	70R	TT	2760317
				* E-marked



Order #	Pattern	Description	Super soft	Soft	Intermediate
2760301	M7311	80/100-21 M7311 51M TT #E			•
2760311	M7313	90/90-21 M7313 54R TT #E			•
2760315	M7314	120/90-18 M7314 65R TT #E			•
2760316	M7314K	140/80-18 M7314K 70R MS TT #E			•
2760317	M7314K	140/80-18 M7314K 70R Soft TT #E	•		
2760302	M7332F	90/90-21 M7332F 54R TT #E			•
2760307	M7324	140/80-18 M7324 70R TT RE #E			•
2760306	M7324	140/80-18 M7324 70R TT RE #E		•	
2760305	M7324	140/80-18 M7324 70R TT RE #E	•		

BITE *ENDURO*

CM723/CM724

The long-lasting enduro tyre that devours the competition

- Tread pattern specifically designed to suit Enduro racing
- Front tyre's smaller tread blocks help to disperse mud and debris
- Rear tyre's larger tread blocks offer outstanding traction on a wide range of surfaces
- Shoulder knobs provide more grip and stability, especially when cornering
- FIM compliant
- E-marked



	Tyre Size	LSR	TT/TL	Order #
F	90/90-21*	54M	TT	2760361

	Tyre Size	LSR	TT/TL	Order #
R	140/80-18*	70M	TT	2760366

* E-marked

CM731/CM732

- Large, aggressive non-directional tread blocks with slit-like grooves are designed to provide excellent traction in rugged road conditions
- Unique shoulder blocks deliver optimum cornering stability
- FIM compliant
- E-marked



	Tyre Size	LSR	TT/TL	Order #
F	90/90-21*	54M	TT	2760360

	Tyre Size	LSR	TT/TL	Order #
R	120/80-18*	62M	TT	2760359

* E-marked



ROAD

PREMIUM RADIALS



MAXXIS

SUPERMAXX SPORT

MA-SP

The Supermaxx Sport is a full-silica, high-grip radial designed to offer wet and dry grip for fast road and track day riding. Suitable for a range of bikes from the popular Aprilia RS125 to the Yamaha XJR1300 and many more in between, this tyre is reliable, grippy and affordable.



MAXXIS

SUPERMAXX ST

MA-ST2

The Supermaxx ST is a sport touring motorcycle tyre designed to provide miles upon miles of comfortable riding with impressive grip when it's needed most.



CST

RIDEMIGRA

CM-S1

A high-speed sport touring tyre designed to offer excellent stability for long journeys, perfect performance in both wet and dry and impressive comfort and fuel-efficiency for passionate sports touring riders.

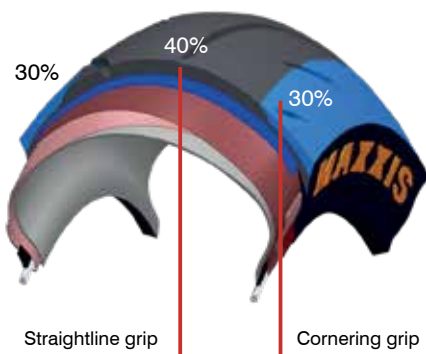
MAXXIS**SUPERMAXX SPORT****MA-SP**

The Supermaxx Sport offers a massive 30% improvement over its predecessor in life, grip and handling

- New dual compound high density full silica tread giving 30% more mileage
- New progressive steel spiral belt with high density at the top of the tread for mileage, moving to mid-density as you lean, to low density at full lean giving a bigger contact patch throughout any turn giving reliable cornering with grip and stability
- High drainage tread pattern for wet days
- Reinforced tread grooves increase the tyre stiffness for stability



- IMPRESSIVE ACCELERATION, HANDLING AND BRAKING
- SUPERB WET AND DRY TRACTION
- SUITABLE FOR TRACK AND ROAD USE
- OPTIMISED FOR SPORT BIKES

DUAL COMPOUND**PROGRESSIVE STEEL BELT**

HIGH DENSITY
= High-speed stability and extra mileage

MEDIUM DENSITY
= Balanced transition in and out of corners

LOW DENSITY
= Enlarged contact patch for extra cornering grip

40% Contact area 25% Contact area 35% Contact area



The Supermaxx Sport has everything the other major manufacturers have, except the price tag.

The Maxxis Supermaxx Sport is designed to rival the flagship sports tyres in the market like the Metzeler Racetec RR, Michelin Power Cup 2, Pirelli Diablo Rosso III and the Bridgestone Battlax R11, where riders value grip over mileage, and cornering speed over comfort.

HIGH DRAINAGE TREAD

HIGH DRAINAGE PATTERN DESIGN

= Improves water drainage speed after breaking water film

PATTERN GROOVE REINFORCED DESIGN

= Improves the stiffness of the tyre shoulder for ride stability

CORNERING GRIP OPTIMISATION

= Guides in the pattern direction for improved cornering grip



	Tyre Size	LSR	TT/TL	Order #
F	110/70-17	54H	TL	2787020
F	120/70-ZR17	58W	TL	2787023

	Tyre Size	LSR	TT/TL	Order #
R	140/70-17	66H	TL	2787021
R	150/60-17	66H	TL	2787022
R	160/60-ZR17	69W	TL	2787024
R	180/55-ZR17	73W	TL	2787025
R	190/55-ZR17	75W	TL	2787027

Tyre Pair	Order #
MA-SP PAIR 120/70-ZR17 and 160/60-ZR17	2787160
MA-SP PAIR 110/70-17 and 140/70-17	2787170
MA-SP PAIR 110/70-17 and 150/60-17	2787175
MA-SP PAIR 120/70-ZR17 and 180/55-ZR17	2787180
MA-SP PAIR 120/70-ZR17 and 190/55-ZR17	2787195

MAXXIS

SUPERMAXX ST

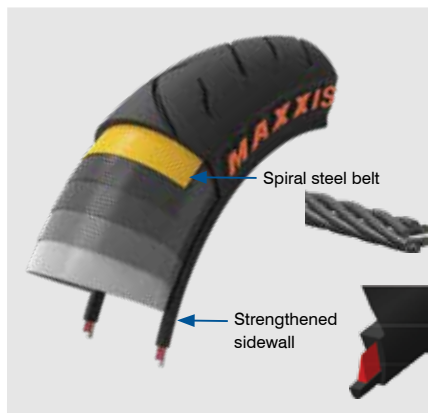
MA-ST2

The Supermaxx ST is the rival to all sport-touring tyres, providing impressive performance and great mileage

- Spiral steel belt for consistent sidewall rigidity
- Maintains structure throughout entire life cycle
- Excellent performance, wet and dry
- Nano-silica compound for immense grip

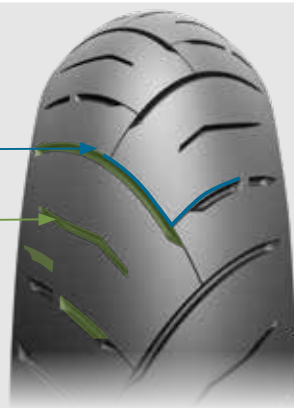
We have seen the Maxxis Supermaxx ST2 fitted OE on the powerful KTM, the tyre was developed with the help of KTM after many year supplying the KTM Enduro and MX range.

The tread has an innovative 3D sipe to improve tread stiffness on the road, with the opposite side allowed to grow, eliminating uneven wear and enhancing wet grip when cornering. With the wet roads we have in the UK, its good to hear the V-shaped groove design improves wet performance.



V-shaped groove design improves wet performance

Intensive groove arrangement increases handling performance in wet conditions



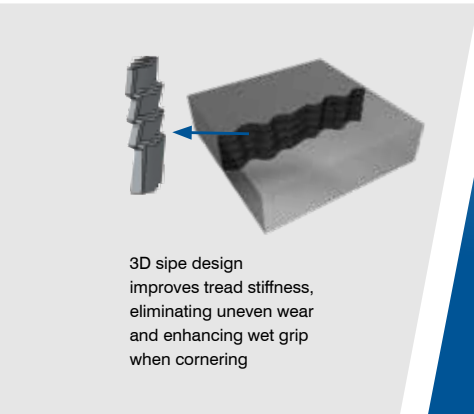


“ An impressive variety of bikes were available ranging from GSR750 and Z800 middleweight roadsters to 1000cc sports bikes right up to ZZ-R1400 and Hayabusa hyperbikes and the STs impressed on them all.

The front, in particular, stood out, being both precise and stable while never lacking grip even under the most extreme riding conditions on whatever type of bike. That said, its firm rigidity, a result presumably of the spiral steel belts used for extra sidewall strength, marked it out as a sports-touring tyre, rather than as a softer pure sports one, but that’s in no way a criticism.

The rear impressed, too. On the bigger, more powerful machines, some movement, slight squirming and, at extremes, minimal, controllable slides were experienced but only when really pushing hard powering out of turns. The rest of the time it was impressively grippy, stable and predictable. But on the smaller, lighter bikes, such as the impressively nimble and taut Kawasaki Z800, there was none of that: the rear always tracking predictably, firmly and with more than enough grip. ”

– Phil West, Motorcycle News



3D sipe design improves tread stiffness, eliminating uneven wear and enhancing wet grip when cornering

	Tyre Size	LSR	TT/TL	Order #
F	120/70-ZR17	58W	TL	2789012

	Tyre Size	LSR	TT/TL	Order #
R	160/60-ZR17	69W	TL	2789123
R	180/55-ZR17	73W	TL	2789115
R	190/55-ZR17	75W	TL	2789135
R	190/50-ZR17	73W	TL	2789130

Tyre Pair	Order #
MA-ST2 PAIR 120/70-ZR17 and 160/60-ZR17	2789160
MA-ST2 PAIR 120/70-ZR17 and 180/55-ZR17	2789180
MA-ST2 PAIR 120/70-ZR17 and 190/50-ZR17	2789190
MA-ST2 PAIR 120/70-ZR17 and 190/55-ZR17	2789195

CST

RIDE MIGRA

CM-S1

CST has finally entered the radial tyre market with the Ride Migra

CST's first Sports Touring tyre is what you would expect from the largest producer of motorcycle tyres in the world. Developed over many years drawing experience from our sister company Maxxis and working with OE (Original Equipment) manufacturers the Ride Migra is a perfect blend of balance, grip and performance demanded by today's rider. Our test riders, ex BSB Champions were amazed at the level of grip and they were unable to break it when testing.

- Excellent high-speed stability
- Flexible manoeuvrability and outstanding stability when cornering
- Perfect performance, in the wet and dry
- Superb ride comfort, ideally suited to sports touring motorcycles
- Radial construction for low fuel consumption on long journeys



	Tyre Size	LSR	TT/TL	Order #
F	110/70-R17	54H	TL	2789145 NEW
F	120/70-ZR17	58W	TL	2789140

	Tyre Size	LSR	TT/TL	Order #
R	140/70-R17	66H	TL	278914K NEW
R	160/60-ZR17	69W	TL	2789141
R	180/55-ZR17	73W	TL	2789142
R	190/50-ZR17	73W	TL	2789143

	Tyre Pair	Order #
	CM-S1 PAIR 120/70-ZR17 and 160/60-ZR17	2789161
	CM-S1 PAIR 120/70-ZR17 and 180/55-ZR17	2789162
	CM-S1 PAIR 120/70-ZR17 and 190/50-ZR17	2789163

Classic

M6011

Maxxis is proud to re-introduce the acclaimed black-wall classic line up after a make-over

Designed to fit and forget, the range offers a deep tread for great mileage and water evacuation on a tread compound specially designed for heavy cruisers, on top of a high density carcass that holds its shape through the full turn on the heavy cruisers.

- Specially formulated compound and matched front/rear tread pattern provide excellent traction and durability in dry and wet weather
- Deep offset tread grooves channel water away from the contact patch
- Additional stability is provided by the offset centre rib
- Built for heavy bikes
- Comfortable, reliable touring tyre



	Tyre Size	LSR	TT/TL	Order #
F	MT90-16	74H	TL	2785006
F	120/80-17	61S	TL	2785031
F	120/90-18	65H	TL	2785028
F	90/90-18	51P	TL	2760161
F	100/90-19	57H	TL	2785050
F	110/90-19	62H	TL	2785048
F	80/90-21	48H	TL	2785054

	Tyre Size	LSR	TT/TL	Order #
R	150/90-15	74H	TL	2785018
R	150/80-15	70H	TL	2785017
R	170/80-15	77H	TL	2785007
R	130/90-16	73H	TL	2785020
R	MT90-16	74H	TL	2785011
R	140/90-16	77H	TL	2785024

* = C6011

CST**MAGSPORT****C6501/C6502**

The Magsport is a high-performance bias ply street tyre. The matching front and rear tread pattern offer improved handling at higher speeds

This new generation of H-rated tubeless street tyre features a modern pattern that led rainwater away from the contact patch, this improves grip levels offering higher safety characteristics.

Ideal tyre for the modern middle / lightweight commuter.

- Matched front and rear patterns for a variety of road conditions
- Aggressive shoulder tread ensures cornering confidence and rapid water dispersal
- The Magsport tyres offer excellent ride comfort and stability



	Tyre Size	LSR	TT/TL	Order #
F	100/80-17	52H	TL	2760167
F	110/70-17	54H	TL	2760168
F	100/90-19	57H	TL	2760171

	Tyre Size	LSR	TT/TL	Order #
R	130/90-16	67H	TL	2760174
R	130/80-17	65H	TL	2760176
R	130/70-17	62H	TL	2760175

C918/M918

Fitted OE on many of today's new influx of small cc machines with a classic feel from China. The front and rear are perfectly balanced to deliver the feel and grip demanded by small cc machines.



	Tyre Size	LSR	TT/TL	Order #
	80/90-17	44S	TL	2760140
	90/90-17	49S	TL	2760142
	100/80-17	52P	TL	2760145
	110/80-17	57S	TL	2760149
	120/80-17	57S	TL	2760146

C6011

Tyre Size	LSR	TT/TL	Order #
90/90-18	51P	TL	2760161



C6039

Tyre Size	LSR	TT/TL	Order #
3.00-18	47P	TL	2760159



C903

Tyre Size	LSR	TT/TL	Order #
3.00-8	38J	TL	2760036



C905

Tyre Size	LSR	TT/TL	Order #
90/90-18	57P	TL	2760158
100/80-18	59P	TL	2760162



C906Y

Tyre Size	LSR	TT/TL	Order #
120/80-16	-	TL	2780005



C910

Tyre Size	LSR	TT/TL	Order #
80/100-18	47P	TL	2760160
2.75-18	42P	TL	2760157



C6577

	Tyre Size	LSR	TT/TL	Order #
R	130/70-17	62P	TL	2760693



C919

	Tyre Size	LSR	TT/TL	Order #
	2.50-17	38L	TL	2760155



CST

CM-NK01

The premium OE tyre on many of today's modern small cc machines from China from Keeway, Lexmoto and Zontes

Everything underneath the attractive pattern is new with the new lightweight carcass delivering a perfect balance of performance and feel. The new compound delivers a tyre that loves to be ridden hard in any circumstance but is also at home with a gentle commute.

- Innovative profile design delivers nimble riding performance
- Optimised compound provides excellent grip without compromising on mileage and wear performance



	Tyre Size	LSR	TT/TL	Order #
F	100/80-17	52S	TL	2760116
F	110/70-17	54S	TL	2760117
F	110/80-17	57S	TL	2760118

	Tyre Size	LSR	TT/TL	Order #
R	130/70-17	62S	TL	2760119
R	140/70-17	66S	TL	2760120
R	150/60-17	66S	TL	2760121

M6102/M6103

- Matching front and rear patterns offer improved handling at higher speeds
- Central grooves lead rain water away from the contact patch, improving grip levels and safety characteristics
- Ideal for the modern middle/lightweight commuter



	Tyre Size	LSR	TT/TL	Order #
F	110/70-17	54H	TL	2781076

	Tyre Size	LSR	TT/TL	Order #
R	130/70-17	62H	TL	2781087
R	150/70-17	69H	TL	2781088
R	110/90-18	61H	TL	2781089
R	120/90-18	65H	TL	2781086

CM615/CM616

- Large contact patch provides better driving comfort and stability
- Use front and rear together for optimal performance
- Superior void ratio and groove width design provides excellent low-speed grip performance and enhanced water dispersal



	Tyre Size	LSR	TT/TL	Order #
F	110/70-17	54H	TL	2760181

	Tyre Size	LSR	TT/TL	Order #
R	150/60-17	66H	TL	2760183

C107

Tyre Size	LSR	TT/TL	Order #
2.50-17	38L	TL	2760002



C108

Tyre Size	PR	TT/TL	Order #
2.50-17	4PR	TL	2760102



C113

Tyre Size	LSR	TT/TL	Order #
2.50-18	40L	TL	2760004



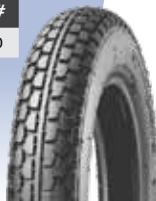
C117

Tyre Size	LSR	TT/TL	Order #
2.75-17	41P	TL	2760022



C177

Tyre Size	PR	TT/TL	Order #
2.50-8	4PR	TL	2720200



C180

Tyre Size	LSR	TT/TL	Order #
3.00-18	47P	TL	2760005
3.50-18	56P	TL	2760007



TIRE FOAM INSERT AIRMOUSSE

ENDURO - MOTOCROSS

RACE PERFORMANCE

	Order #	Tyre size	Size	Model	Man SKU
F	2926112	60/100-14			SMC6010014MH
F	2926113	70/100-19			SMC7010019MH
F	2926115	80/100-21 & 90/90-21			SMC8010021SD
F	2926118	90/100-21		Enduro	SMC9010021H
F	2926119	90/100-21		Supersoft	SMC9010021S
R	2926100	100/100-18		HD	SMC10010018HD
R	2926101	100/90-19			SMC1009019SD
R	2926102	100/90-19		Small	SMC1009019SM
R	2926103	110/100-18			SMC11010018HD
R	2926104	110/90-19			SMC1109019HD
R	2926105	110/90-19 & 120/80-18		Small	SMC1109019SM
R	2926109	140/80-18			SMC1408018HD
R	2926106	140/80-18	Big	Extreme	SMC1408018BE
R	2926107	140/80-18	Big	Soft	SMC1408018BS
R	2926108	140/80-18		Extreme	SMC1408018EX
R	2926110	140/80-18		Rally	SMC1408018RY
R	2926111	140/80-18		Soft	SMC1408018S
R	2926114	80/100-12			SMC8010012MH
R	2926116	90/100-16			SMC9010016SD
R	2926117	90/100-16		Small	SMC9010016SM
	2926120	Airmousse Gel Tube 100g			

REGULAR PERFORMANCE

	Order #	Tyre size	Size	Model	Man SKU
F	2926000	70/100-17			
F	2926003	70/100-19			
F	2926001	80/100-21 & 90/90-21			
R	2926004	100/90-19			
R	2926005	110/90-19			
R	2926006	120/90-18 & 110/100-18			
R	2926007	140/80-18 & 120/100-18			
R	2926002	90/100-16			
	2860712	GEL 50ML			

RACE PERFORMANCE FLAT-PROOF TECHNOLOGY



TRY OUR NEW FITMENT GUIDE



Our Mousse Maximizer fitment guide is regularly updated to match your bike and your tyre with the perfect mousse. By using our guide, you can quickly and easily identify the most suitable mousse type for you and your riding conditions. Scan the QR code to see the latest fitments.

NEXT GENERATION PREMIUM MOUSSE INSERTS



**YOUR
LONGEST RIDE
STARTS HERE**

MOUSSE COMPARISON CHART	RACE BEST CHOICE!	REGULAR
	Race Performance	Regular Performance
Durability	★★★★★	★★★★
Traction	★★★★★	★★★
Performance	★★★★★	★★★
Weight	★★★★★	★★★★★
Packing	★★★★★	★★★
Easy Installation	★★★★★	★★★★★
Wide Selection	★★★★★	★★★
Race Readiness	★★★★★	★★★★
Flatproof	★★★★★	★★★★★
HQ Materials	★★★★★	★★★★
Price	★★★★★	★★★★★
Stability	★★★★★	★★★
Elite level racing	★★★★★	★★★
Weatherproof	★★★★★	★★★★★

Race Performance Line is specially developed and tested with professional riders to guarantee the best possible results. Airmousse improved technology is the next generation mousse with impressive advantages that ensure trust and reliability to the rider.

Performance

Outstanding traction, control, stability and safety

Weight

High-tech production with unique materials makes it the lightest mousse on the market

Long Durability

High quality resistance and endurance

Vacuum Packaging

Vacuum sealed in production to ensure shape and freshness until your first ride

Easy Installation

Mousses with perfect fit and flexibility

Wide Selection

The widest range of off-road tire foam inserts

STREETBIKE/SCOOTER

Order #	Description	Brand
2860656	2.50-8 JS87C	CST
2820151	2.50-8 TR87	CST
2820170	3.00-8 JS87C	CST
2820166	3.00-8 TR87	CST
2860619	3.50/4.00-8 JS87C	CST
2820176	3.50/4.00-8 TR87	CST
2860634	2.50/2.75-10 TR4	CST
2820230	3.00/3.50-10 JS87C	CST
2820193	3.50/4.00-10 JS87C	CST
2860658	2.75/3.00-12 JS87C	CST
2860618	3.00/3.25-12 TR4	CST
2860660	2.25/2.50-14 TR4	CST
2860661	2.50/2.75-14 (70/90-14, 80/90-14) TR4	CST
2820194	2.75-14 TR4	CST
2860620	2.75/3.00-14 TR4	CST
2860668	130/90-15 TR4	CST
2860625	2.75/3.00-16 TR4	CST
2860626	3.25/3.50-16 TR4	CST
2860603	2.25/2.50-17 TR4	CST
2860633	2.50/2.75-17 TR4	CST
2860636	2.75/3.00-17 TR4	CST
2860627	3.25/3.50-17 TR4	CST
2860638	3.75/4.00-17 TR4	CST
2860605	2.50/2.75-18 TR4	CST
2860615	2.75/3.00-18 TR4	CST
2860607	3.25/3.50-18 TR4	CST
2860608	3.50/4.00-18 TR4	CST
2860609	4.00/4.50-18 TR4	CST
2860629	2.25/2.50-19 TR4	CST
2860637	2.50/2.75-19 TR4	CST
2860612	2.75/3.00-19 TR4	CST
2860622	3.25/3.50-19 TR4	CST
2860635	3.50/4.00-19 TR4	CST
2860640	2.50/2.75-21 TR4	CST
2860610	2.75/3.00-21 TR4	CST

ALUMINIUM BLOCK TYPE SECURITY BOLTS

Order #	Description
2959921	WM1 RIM 1.60
2959923	WM2 RIM 1.85
2959924	WM3 RIM 2.15
2959925	WM4 RIM 2.50
1830070	10915 WM1 Tyre Clamp - 2.50/3.00mm (1.60 Inch)
1830071	10916 WM2 Tyre Clamp - 3.25/3.50mm (1.85 Inch)
1830072	10917 WM3 Tyre Clamp - 4.00/4.25mm (2.15 Inch)



All Maxxis and CST Standard & Heavy Duty tubes are made from a special formula of high-density butyl rubber to ensure the tyre stays inflated.

- Recommended for Motocross and Supercross racing
- The Heavy Duty Tubes are 33.33% thicker than the Standard tubes.

All Maxxis and CST Extra Heavy Duty tubes are made from the same special formula of high-density butyl rubber as the Standard and Heavy Duty tubes.

- Recommended for Enduro and Extreme Enduro
- The Extra Heavy Duty tubes are 100% thicker than the Standard tubes

MX/ENDURO/ SUPERMOTO HEAVY DUTY

Order #	Description	Brand
2860681	80/100-12 TR4	Maxxis
2860682	60/100-14 TR4S	Maxxis
2860684	90/100-16 TR4	Maxxis
2860675	120/70-17 TR4	CST
2860730	100/110/120/100-18 TR4	CST
2860688	100/110/120/100-18 TR4	Maxxis
2860697	100/110/120/100-18 TR4	Maxxis
2860689	100/110/120/90-19 TR4	Maxxis
2860698	100/110/120/90-19 TR4	Maxxis
2860731	100/110/120/90-19 TR4	CST
2860686	70/100-19 TR4	Maxxis
2860690	80/100-21 TR4	CST
2860699	80/100-21 TR4	Maxxis
2860732	80/100-21 TR4	CST

ATV/UTV

Order #	Description	Brand
2820101	145/70-6 TR87	CST
2860642	25/12-9 TR6	CST

RIM TAPES

Order #	Diameter	Width
2960904	14"	22mm
2960905	16"	22mm
2960901	17"	22mm
2960902	18"	22mm
2960903	19"	22mm
2960906	21"	22mm
2960922	18"	35mm
2960923	19"	35mm

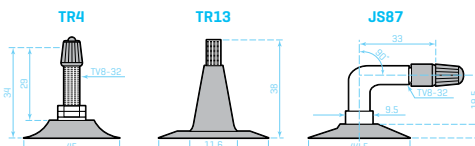
WHEELCHAIR/IMPLEMENT

Order #	Description	Brand
2820010	2.50/4 (8 x 2) TR13	CST
2820023	2.80/2.50-4 TR87	CST
2820020	3.00-4 TR87	CST
2820025	4.10/3.50-4 TR13	CST
2820030	4.10/3.50-4 TR87	CST
2820008	9/3.50-4 TR87	CST
2820060	11/4.00-5 TR13	CST
2820065	11/4.00-5 TR87	CST
2820040	3.40/3.00-5 TR87	CST
2820044	4.00-5 TR87	CST
2820045	4.10/3.50-5 TR13	CST
2860643	4.10/3.50-5 TR87	CST
2820104	12/6.00-6 TR13	CST
2820090	4.10/3.50-6 (4.00 x 6) TR87	CST
2820100	5.30/4.50-6 TR87	CST
2820103	8.00/6 JS87C	CST
2800002	8 x 1 1/4 WH767P ND32 A45	CST
2820002	80/65-8 TR87	CST
2820192	3.00/3.25-10 JS87C	CST
2800005	12 x 1/2 x 2&1/4 WH767 right angle	CST
2800008	12&1/2 x 2&1/4 WH767P A 45° valve	CST
2800016	16 x 2.125 SV	CST
2800004	22 x 1&3/8 SV	CST
2800029	22 x 1&3/8 SV	CST
2800031	24 x 1&3/8 SV	CST
2800030	24 x 1.0 SV OEM <- CAP > 25-540/541	CST
2820004	170/35 (WH767P-A45) 45° valve	CST
2820003	200 x 50 TR87	CST
2820184	5.70/8 JS87C	CST

TUBES & MOUSSES

TUBE SIZING CHART

Tube Size	Will Fit Tyre Size	
2.50/2.75-8	2.50-8	2.75-8
3.00/3.25-8	3.00-8	3.25-8
3.50/4.00-8	3.50-8	4.00-8
2.50/2.75-10	2.50-10	2.75-10
3.00/3.25-10	3.00-10	3.25-10 80/90-10
3.50/4.00-10	3.50-10	4.00-10 100/90-10
2.75/3.00-12	2.75-12	3.00-12 80/100-12 100/80-12
3.00/3.25-12	3.00-12	3.25-12 80/100-12 100/80-12
2.75/3.00-14	2.75-14	3.00-14 3.60-14 80/80-14
3.50/3.75-14	3.50-14	3.75-14 4.10-14 110/80-14
2.75/3.00-16	2.75-16	3.00-16 80/100-16 80/90-16
3.00/3.25-16	3.00-16	3.25-16 90/90-16 100/80-16
3.25/3.50-16	3.25-16	3.50-16 100/90-16 90/100-16 90/90-16 100/80-16
4.00/4.60-16	4.00-16	4.60-16 120/80-16 110/90-16 120/90-16
5.00/5.10-16	5.00-16	5.10-16 130/90-16 140/80-16 140/90-16 150/80-16
2.25/2.50-17	2.25-17	2.50-17 3.10-17 70/100-17
2.75/3.00-17	2.75-17	3.00-17 3.10-17 80/90-17 100/80-17
3.00/3.25-17	3.00-17	3.25-17 100/80-17
3.25/3.50-17	3.25-17	3.50-17 110/80-17
3.75/4.00-17	3.75-17	4.00-17 120/80-17
4.00/4.50-17	4.00-17	4.50-17 4.25-17 4.60-17 110/90-17 110/100-17 120/80-17 120/90-17 130/80-17 130/70-17
5.00/5.10-17	5.00-17	5.10-17 130/90-17 140/80-17 140/90-17 5.30-17
2.25/2.50-18	2.25-18	2.50-18 3.10-18
2.50/2.75-18	2.50-18	2.75-18 3.10-18 80/90-18
2.75/3.00-18	2.75-18	3.00-18 3.60-18 80/90-18 90/90-18 80/100-18
3.00/3.25-18	3.00-18	3.25-18 3.60-18 90/90-18
3.25/3.50-18	3.25-18	3.50-18 3.60-18 4.10-18 90/90-18 90/100-18 100/90-18 110/80-18
3.50/4.00-18	3.50-18	4.00-18 4.10-18 4.25-18 4.60-18 100/90-18 100/100-18 110/90-18 120/80-18
3.75/4.00-18	3.75-18	4.00-18 4.25-18 4.60-18 100/100-18 110/90-18 120/80-18
4.00/4.50-18	4.00-18	4.50-18 4.25-18 4.60-18 4.70-18 110/90-18 110/100-18 120/80-18 120/90-18 130/70-18 130/80-18
5.00/5.10-18	5.00-18	5.10-18 130/90-18 140/80-18 140/90-18 120/100-18 140/70-18
2.50/2.75-19	2.50-19	2.75-19 70/100-19
2.75/3.00-19	2.75-19	3.00-19 3.60-19 90/90-19
3.00/3.25-19	3.00-19	3.25-19 3.60-19 90/90-19
3.25/3.50-19	3.25-19	3.50-19 3.60-19 4.10-19 90/90-19 100/90-19 110/80-19
3.50/4.00-19	3.50-19	4.00-19 4.10-19 4.25-19 4.60-19 100/90-19 110/80-19 110/90-19 120/80-19
4.00/4.25-19	4.00-19	4.25-19 110/90-90 120/80-19 120/90-19
2.50/2.75-21	2.50-21	2.75-21 70/100-21 80/80-21 80/90-21 90/80-21
2.75/3.00-21	2.75-21	3.00-21 80/90-21 80/100-21 90/80-21 90/90-21 100/80-21



ABR 2025
FESTIVAL
27-29 | JUNE | 2025
RAGLEY HALL • WARWICKSHIRE

MOTORCYCLE TYRE CATALOGUE 2025

ADVENTURE • ENDURO • ROAD

IMPORTER OF
PROFESSIONAL
POWERSPORTS
PRODUCTS FOR
50 YEARS

01394 604040
www.bickers-online.co.uk

BICKERS 
POWERSPORTS

50
YEARS